



# CAROLINE COUNTY

## Program Open Space Annual Program Plan FY2022

Submitted on June 1, 2021

Prepared and submitted in accordance with state mandates and guidelines as documented in the Program Open Space Grants Manual. This Annual Program conforms to the Caroline County Comprehensive Plan and the 2017 Caroline County Land Preservation Parks and Recreation Plan.

---

Susan C. Simmons

Caroline County Recreation & Parks Director

---

Maureen Keogh

Caroline County Recreation & Parks Advisory Board President

The 2021-22 Annual Program presents a detailed plan for Caroline County’s investment of Program Open Space to expand and rehabilitate existing public park facilities within the exclusive jurisdiction of the county and/or in partnership with incorporated municipalities. The Program is consistent with the 2017 Caroline County Land Preservation, Parks and Recreation Plan (LPPRP), scheduled for amendment into the County Comprehensive Land Use Plan on June 27, 2017. Both the LPPRP and this Annual Program are presented in partnership with the Caroline County Recreation and Parks Citizen Advisory Board.

The projects incorporated herein are also based on the following factors:

1. It is an on-going project that has been included in the previous plan.
2. It is a local POS allocation recommendation by the County to support park development efforts by an incorporated municipality and will likely be leveraged into a future Community Parks and Playgrounds grant request by the municipality.
3. The included project establishes a general distribution balance of POS and /or project development support by county professionals over the geographic county regions.
4. The county anticipates or acknowledges mounting support from the community, local and county elected officials and/or private funding or community partnership support for a specific project.

Although in total, the projects in the FY2022 Program Plan exceed the grant funding resources available to the county, the completion date projected for each project is noted in within each project title. Each of these projects are specifically referenced in the 2016 LPPRP in Chapter III in section G. *Capital Improvement Acquisition Priorities* (pp.60) and in Table III-6 Priorities for Rehabilitation, Development and Land Acquisition, 2017-2025 (pp. xx).

The Annual Plan does not include the FY2023 Community Parks and Playground applications from Caroline County municipalities, nor does it include the State’s GO Bond Fund allocation for park development authorized unexpectedly during the 2021 Maryland Legislative session.

Project Summary Table: FY2022

LPPRP Inventory Reference	Region	Project Location & Name	Project Acreage	Funding Sources				Development Share
				Local POS	General Fund	Other	TOTAL	
58	N	Ober Community Park FY22	3.97	60,000		6000	66,000	
44	S	Jonestown Community Park FY22	3.59	50,000	5,000		55,000	
36	N	Henderson Community Park FY22	2.3	50,000	5,000		55,000	
12	S	Choptank Nature Park FY22	12.6	75,000		7,500	82,500	

<sup>1</sup> The inventory reference corresponds with the regional map identifier in the 2017 LPPRP. These maps are included as a reference at the end of this document.

34	S	Harmony Community Park FY22	3.1	50,000		5,000	55,000	
<b>FY2022 Development Total</b>					<b>285,000</b>	<b>10,000</b>	<b>18,500</b>	<b>313,500</b>
New		Municipal Land acquisition - TBD		175,122			175,122	Acquisition Share
		LPPR Plan (FY22 Encumbrance)		25,000			25,000	
<b>FY2022 Acquisition Total</b>			<b>1</b>	<b>200,122</b>			<b>200,122</b>	
<b>POS Allocations Encumbered &amp; Active</b>								
LPPR Inventory Reference <sup>2</sup>	Region	Project Location & Name	Project Acreage	Funding Sources				
				Local POS	General Fund	Other	TOTAL	
83	N	North County Regional Park (FY23) (pos#6878-5-204)	207	88,441	10,000	10,000	108,441	
10	S	Chambers Park (FY19) POS #6879-5-205	16	20,000		2,000	22,000	
12	s	Choptank Nature Park (FY19) POS #6877-5-203	12	14,925	6,249	1,500	22,674	
70	s	South County Regional Athletic Complex (FY18) # pos #06644-05-0197	35	126,325	10,000	15,000	151,325	
54	N	Marydel Community Park (FY18) #6573-5-194 #7089-5-208 5213-05-150	25	20,315 11,973 75,000	10,420  9552		30,735 11,973 84,552	
26	s	Federalsburg Elementary School Ballfield (FY22) #6643-5-196	8.9	9,161			9,161	
44	S	Jonestown Community Park POS 7209-5-211	3.59	50,000	5,000		55,000	

<sup>2</sup> The inventory reference corresponds with the regional map identifier in the 2017 LPPRP. These maps are included as a reference at the end of this document.

36	N	Henderson Community Park FY22 POS 7210-5-212	2.3	50,000	5,000		55,000	
		LPPRP POS 6767-05- 0200 (FY22)		44,508			44,508	
<b>TOTAL:</b>			<b>71.1</b>	<b>510,648</b>	<b>56,221</b>	<b>28,500</b>	<b>595,369</b>	

**Project Descriptions**

**83 NORTH COUNTY REGIONAL PARK** (County Tax Map 15: Parcel 135)

Development of the 207 acre waterfront parcel located north of Greensboro on the Upper Choptank River includes conservation design and construction to stabilize existing ditch erosion, completion of a forest and natural resources management plan, expansion of the preliminary public access points to the natural walking trails (Parking, wayfinding signs, limited trail construction) and a master plan process that balances future recreation asset development with resource protection and the community/agency capacity to manage the park.



*FNorth County Regional Park*

**54 Marydel Community Park** (County Tax Map 2; parcel 18)

This is Phase II development to serve the 1,500 citizens in the north county region. POS Supported construction in this FY will be leveraged with two grant awards to the Town of Marydel: Community Parks and Playground grant and a LWCF grant. Improvements include a second multipurpose field, irrigation improvements for the existing and new field, expanded parking area, storm water management improvements, additional paved pathways and a fenced maintenance building. The project is consistent with the LPPRP and the State Planning Visions and is within the jurisdictional limits of the Town of Marydel.



1Plan for LWCF Funding Submission for Marydel Park Improvements

**36 HENDERSON COMMUNITY PARK**

This is a capital reconstruction grant to restore an existing playground, additional tree planting, perimeter walking trail and a small multipurpose field. The park was established in in 1990 and has not undergone any significant improvements. Creating a safe pedestrian and cycling pathway from nearby neighborhoods is also an accessibility concern.



**58 OBER COMMUNITY PARK**

Project leverages Community Parks and Playground funding from the Town of Greensboro with local POS funds to reconstruct existing tennis courts, establish a perimeter walking trail and install small parking and security lighting areas. Project includes active collaboration with the Greensboro Park advisory Board and the Mayor and Council.

**70 SOUTH COUNTY REGIONAL PARK** (County Tax Map 54: Parcel 88)

Development scope includes perimeter trail development, and a pavilion/concession facility with utility infrastructure for future restrooms. This 73-acre site was acquired with POS funds in 2001. The multipurpose fields support league play for soccer and youth lacrosse.



Figure 2: South County Regional Park

**12 CHOPTANK NATURE PARK**  
(Caroline Tax Map 58: p.4)

This 12.6-acre parcel proposes the phased development of walking trail and a wildlife viewing station around the dredge disposal berms. *The final master development plan will include broad community and neighborhood review per the notification requirements of any development within Maryland Critical Area boundaries.* The project also includes a partnership with the Caroline Historical Society for the location is a historic building – eventually an interpretive center for the site and the Underground Railroad.



Figure 3: Choptank Nature Park and Choptank Marina



**34 HARMONY COMMUNITY PARK**

Construction of a new park picnic pavilion, restore perimeter walking trail and playground area is the objective of the modest park renovation, supported by a memorial gift from a local resident.

**44 JONESTOWN COMMUNITY PARK**

Capital restoration includes updating existing playground equipment, installation of a basketball court, paved perimeter walking trail, clearing underbrush from wooded areas, and additional security lighting. Pedestrian access from neighborhood areas along Route 16 is a safety and accessibility issue.



**10 CHAMBERS PARK, TOWN OF FEDERALSBURG**

In active operation since it was established in 1979, Chambers Park requires capital renovation of its historic features (log cabin) and a redesign of traffic and facility features to optimize public access, public safety and recreation use. Local POS investment will likely be combined with an FY23 application for Community Parks & Playgrounds funding for final construction.

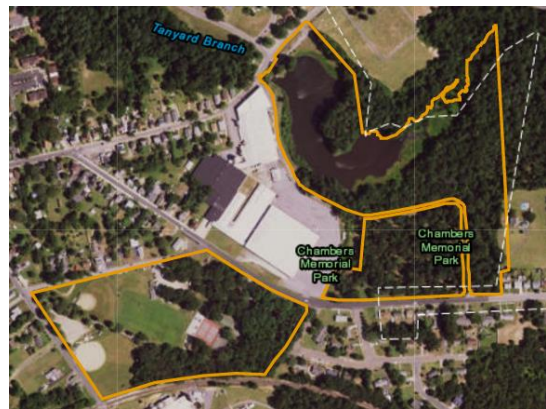
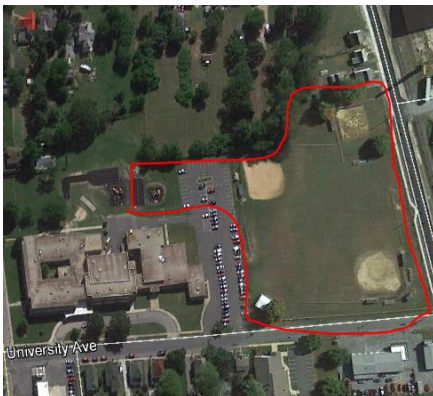


Figure 4: Chambers Community Park



**26 Federalsburg Elementary School Community Park (County Tax map 201; parcel 459 & 460)**

There are 9 acres surrounding the school within the Town of Federalsburg. Park facilities include youth baseball field, concession stands and playground. Capital investments in the spectator seating area, dugouts and community playground improvements are the target of POS funds.

5 FES Baseball Fields, BOE property within Town of Federalsburg

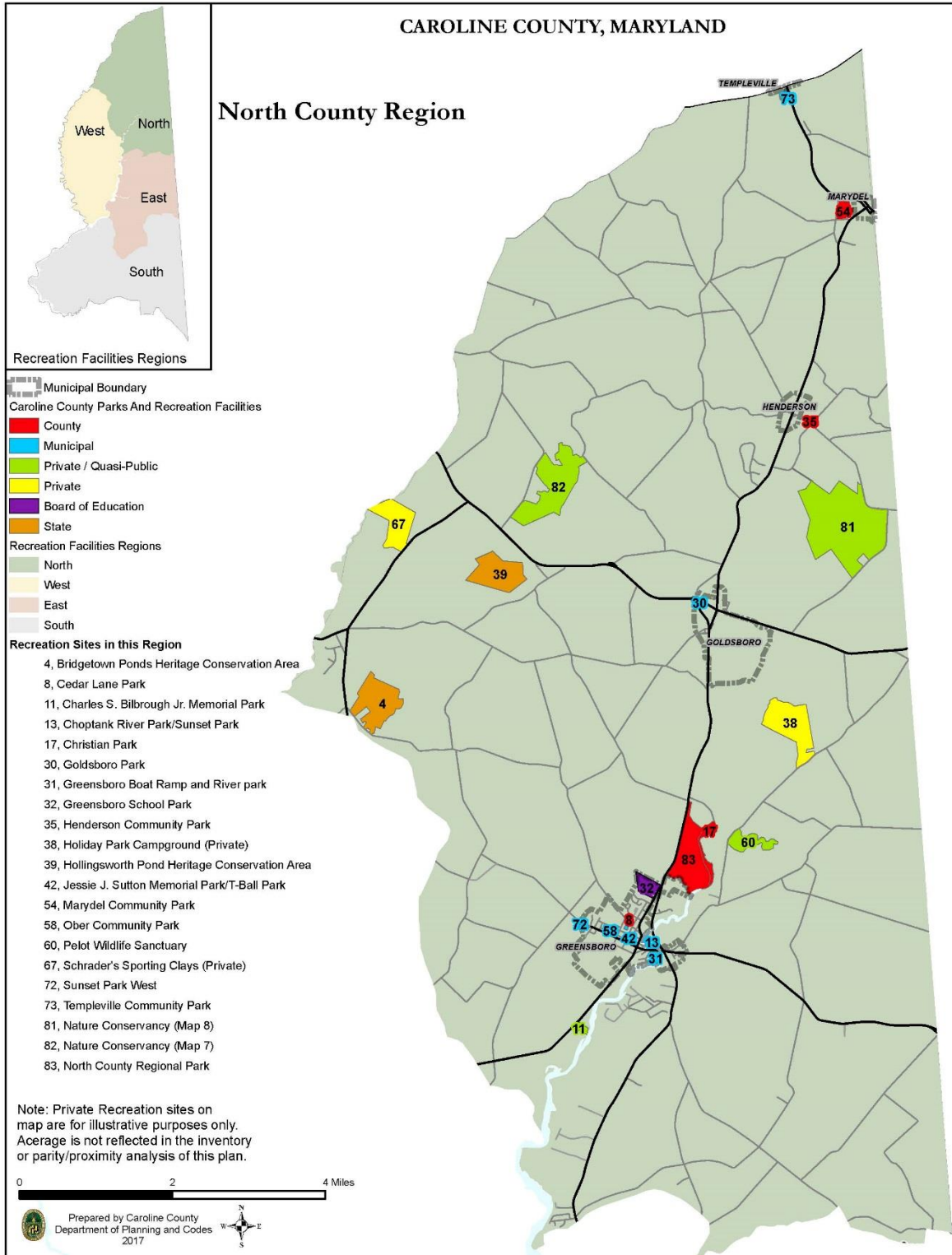
**LAND PRESERVATION, PARKS AND RECREATION MASTER PLAN**

The 2016 Caroline County Plan will be amended to the County Comprehensive Land Use Plan by July 1, 2017. To continue the implementation of the park and preservation planning systems that will inform the development of the 2021 Plan, the county proposes the encumbrance of \$25K from its land acquisition allocation account.

**COUNTY LOCATION MAPS THAT FOLLOW** are excerpts from the 2017 Caroline Land Preservation, Parks and Recreation Plan.

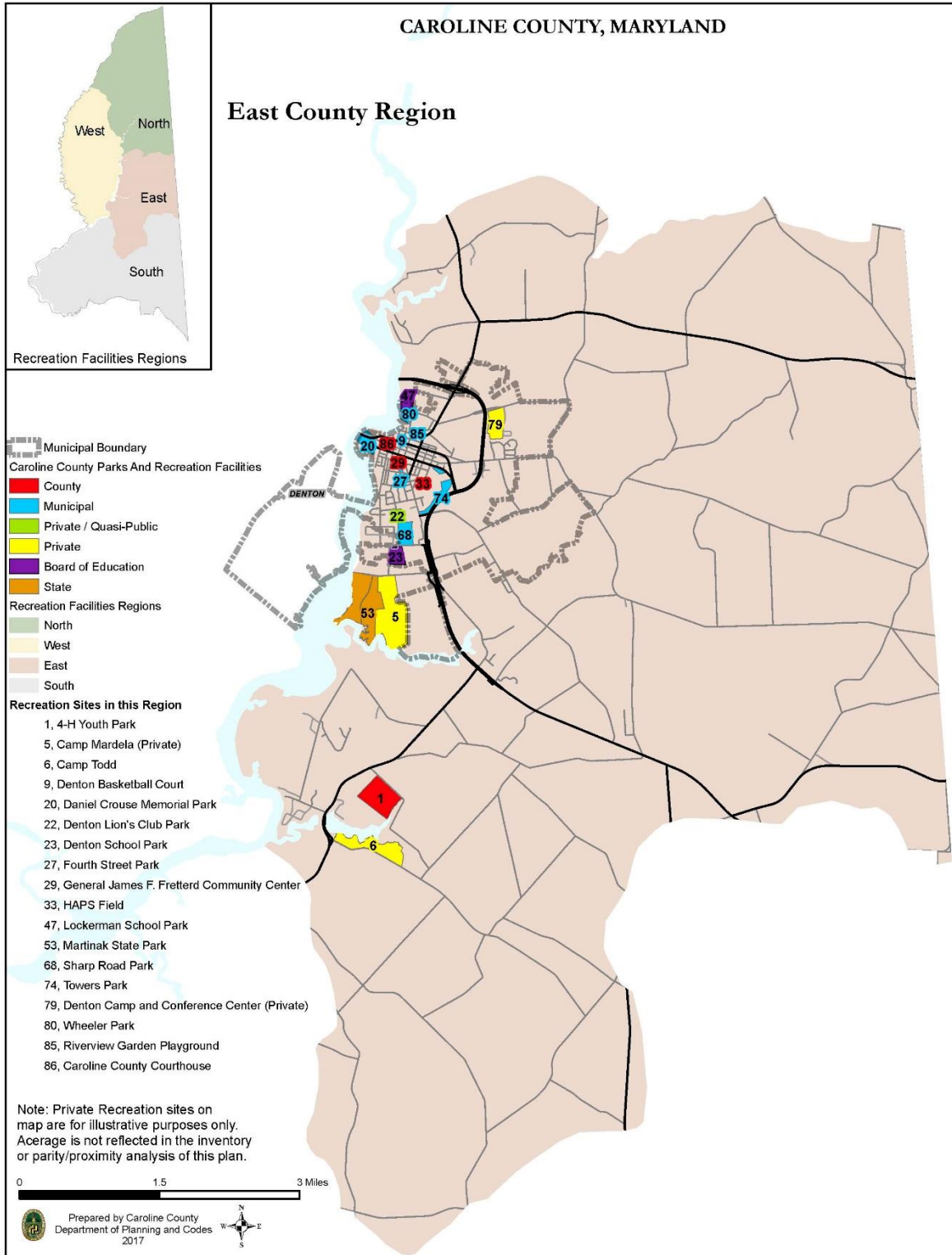
# CAROLINE COUNTY, MARYLAND

## North County Region



CAROLINE COUNTY, MARYLAND

East County Region



# CAROLINE COUNTY, MARYLAND

## South County Region

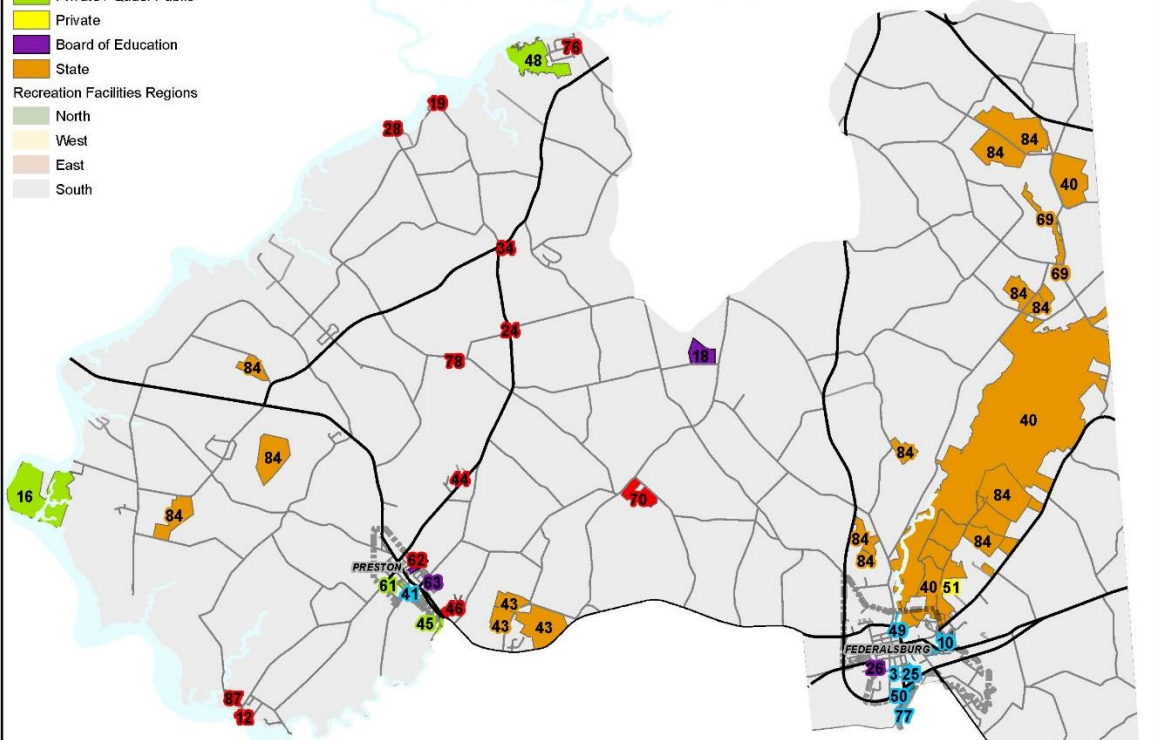


Recreation Facilities Regions

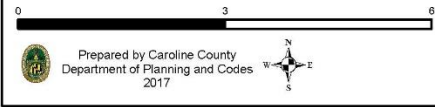
- Municipal Boundary
- Caroline County Parks And Recreation Facilities**
- County
- Municipal
- Private / Quasi-Public
- Private
- Board of Education
- State
- Recreation Facilities Regions**
- North
- West
- East
- South

### Recreation Sites in this Region

- |   |   |
|---|---|
| 3, Austin Avenue Playground                 | 45, Linchester Mill                       |
| 10, Chambers Park                           | 46, Linchester Mill Pond                  |
| 12, Choptank Marina                         | 48, Lynch Preserve (Private)              |
| 16, Choptank Wetlands Preserve              | 49, Marshyhope Rec Area North             |
| 18, Colonel Richardson High School          | 50, Marshyhope Rec Area South             |
| 19, Colonel Richardson Tomb / Gilpins Point | 51, Marshyhope Rod and Gun Club (Private) |
| 24, Dickinson's Tomb                        | 61, Preston Lions Club Park               |
| 25, Federalsburg Marina Park                | 62, Preston School Baseball Field         |
| 26, Federalsburg School Park                | 63, Preston School Park                   |
| 28, Ganey's Wharf                           | 69, Smithville Community Lake             |
| 34, Harmony Community Park                  | 70, South County Athletic Field Complex   |
| 40, Idylwild Wildlife Management Area       | 76, Two Johns Landing                     |
| 41, James T. Wright Memorial Park           | 77, VFW Boat Ramp                         |
| 43, John S Ayton Tree Nursery               | 78, Webb Fluharty Cabin                   |
| 44, Jonestown Community Park                | 84, Chesapeake Forest Lands               |
|   | 87, Choptank Nature Park                  |



Note: Private Recreation sites on map are for illustrative purposes only. Acreage is not reflected in the inventory or parity/proximity analysis of this plan.



CAROLINE COUNTY, MARYLAND

West County Region

